



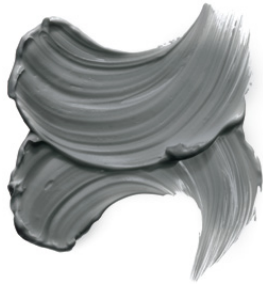
PRODUCT INFORMATION





Achieve therapeutic facial-like results with this Infinite Charcoal Activated Mask.

A CLAY MASK THAT'S LIKE
A THERAPEUTIC FACIAL



Apply to face or body. Allow 15–20 minutes for product to dry. Rinse off with water.

For external use only. Keep out of reach of children. Avoid getting into eyes. If eye contact occurs, flush thoroughly with water. If irritation persists, contact a physician.

INFINITE CHARCOAL ACTIVATED MASK

The large porous surface of this clay charcoal mask absorbs impurities of the skin and filters or balances oil and water levels for healthier more vibrant skin, all while minimizing pore size. After treatment, your skin will appear smoother and more vibrant and will be softer to the touch.

- > Designed to refine skin and remove surface impurities
- > Encourages collagen synthesis, while exfoliating
- > Promotes deep cleansing of molecular pores
- > Provides calming benefits to the skin

Ingredients: Purified Water, Kaolin, Magnesium Aluminum Silicate, Activated Charcoal, Niacinamide, Ceramide NP, Ceramide AP, Ceramide EOP, Glycyrrhiza Glabra (Licorice) Root Extract, Aloe Barbadensis (Aloe Vera) Leaf Juice, Phytosphingosine, Cholesterol, Sodium Lauroyl Lactylate, Xanthan Gum, Carbomer, Maltodextrin, Iron Oxides, Phenoxyethanol, Ethylhexylglycerin.


THRIVE
SKIN